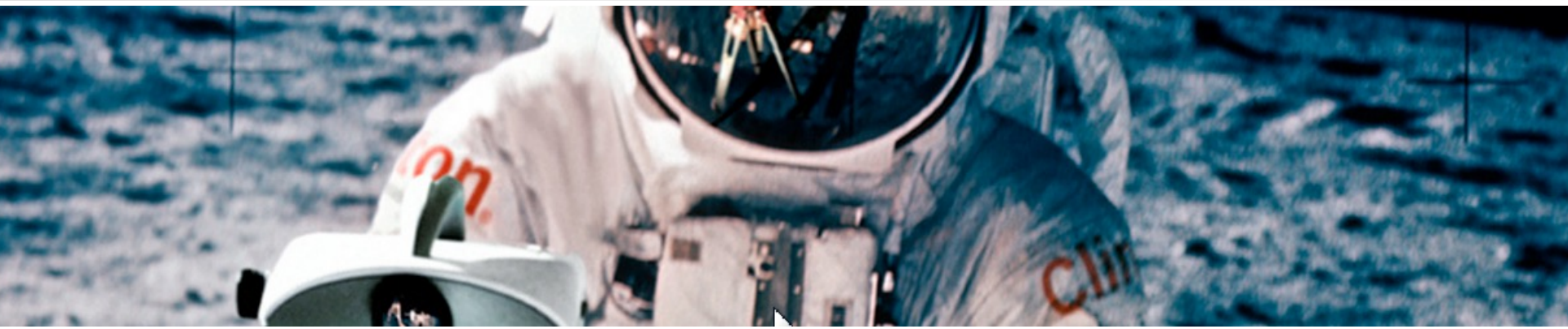
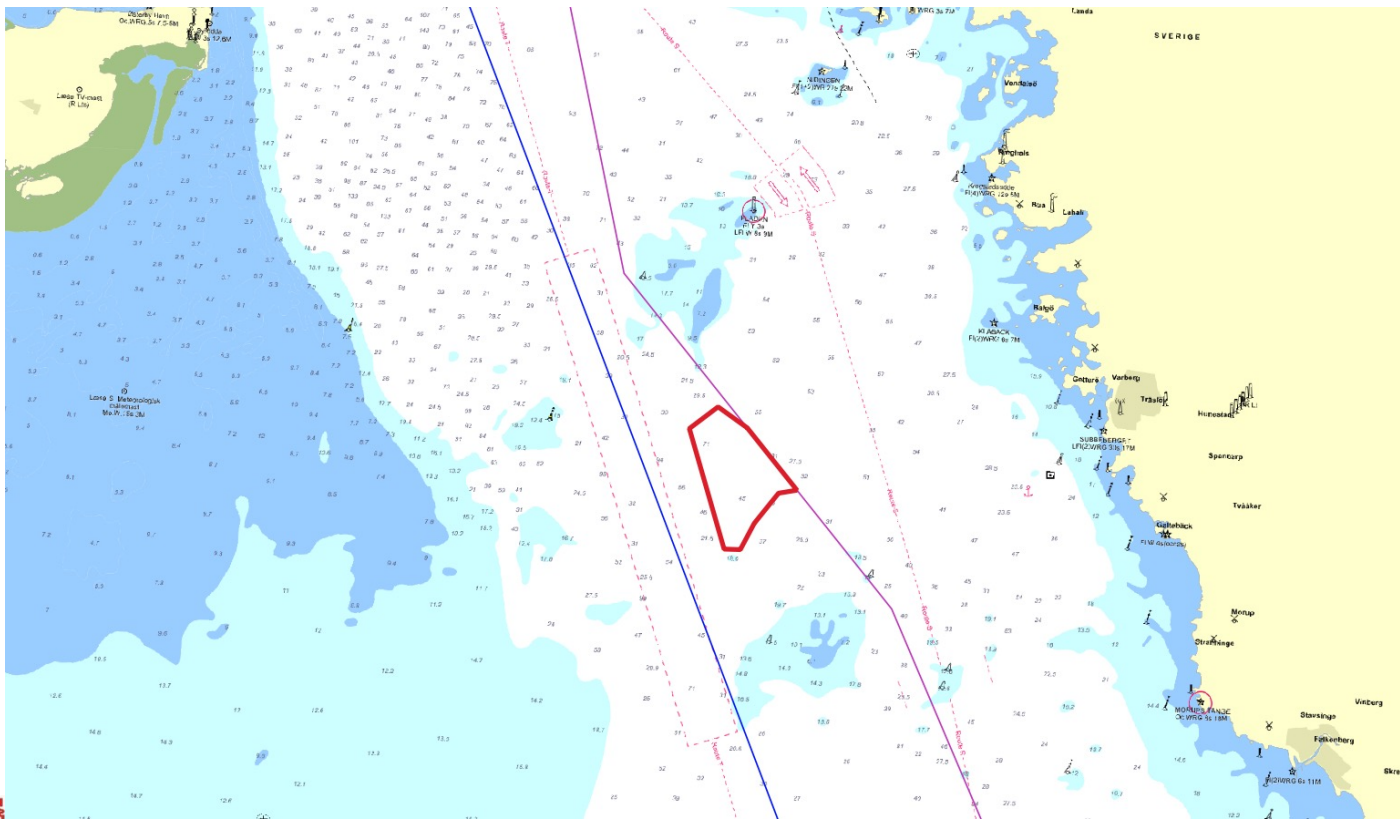


## Notice to Mariners Geophysical survey, Galene, Kattegatt area



- VESSEL:** **M/V NORTHERN STORM**
- MANEUVERABILITY:** **LIMITED MANEUVERABILITY**
- EQUIPMENT:** **TOWED AND HULL MOUNTED (MBES, SBP, SVP, SPARKER)**
- TIME:** **1<sup>ST</sup> OF NOVEMBER TO 23<sup>RD</sup> OF DECEMBER – 2023**
- AIM:** **GEOPHYSICAL CONDITIONS FOR A POTENTIAL FUTURE WIND FARM**





### M/V Northern Storm

Calls sign: MISA7

Bridge: +46 31 30 11 132

Email: [master-northernstorm@clinton.se](mailto:master-northernstorm@clinton.se)

### Contact person at Clinton Marine Survey:

Philip Ljungström	Project Manager	+46 708 79 90 26
Martin Wikmar	CEO	+46 708 79 90 20

